

IN THIS ISSUE:

Inscribed Quilts Visitors (p. 3)

*Our Historic circa 1820s
Hand-colored Map! (p. 4)*

"Airbnbs" of Olde (p. 5)

*Seeking info for our
upcoming exhibit (p. 6)*

Calendar of Events (p. 7)

What's New in Acquisitions (p. 7)

*Pathway to History bricks
for a limited time! (p. 8)*

FROM THE FRONT PORCH

THE NEWSLETTER OF THE
HISTORICAL SOCIETY
OF MOORESTOWN



View From the Porch

By the time this newsletter reaches your mailbox in June, the Historical Society of Moorestown will be preparing for our annual summer hiatus. Although the Trustees will still be hard at work over the months of July and August—receiving and logging accessions, fulfilling requests for historic plaques, assisting residents with research, and planning next fall's exhibit—our lecture series and regular Sunday hours are suspended for the Summer. So it is a good time to reflect on what I feel has been a very productive year.

Our year started with the much-anticipated opening of Percheron Park at the corner of Main and High Streets. HSM Trustee Julie Maravich, also a member of the Friends of Percheron Park, functioned as the liaison between the two groups. The park honors the memory of Edward Harris II. Harris, who lived in the Smith-Cadbury Mansion from his birth in 1799 until 1843, is credited with introducing the Percheron horse breed to America.

A few days later we opened our current exhibit, the wildly popular, "Inscribed Quilts: A portal to Moorestown History." Under the leadership of Linda Vizi, the exhibit focuses on five inscribed quilts and the lives and adventures of many of the signers of those quilts. Hundreds of visitors have gone through the exhibit, including several groups and individuals who traveled a great distance to see it. The exhibit will be up until the end of June when the quilts will get a well-deserved rest and be put back into our climate-controlled storage area.

The exhibit opening was followed by our annual Ghost Tours. However, there was a twist this year. Under the leadership of Trustees Gary Ell and Julie Maravich this past year's event was called the "Living History and Ghost Tour." Rather than just hearing ghost stories, last fall's tour brought the ghosts to life as several famous figures

from Moorestown's history were portrayed by current residents in period costumes. The ghosts of people from our past like Alice Paul and John Woolman popped up where the tour-goers least expected it. We had big crowds for all the tours (even while competing with the *Phillies* in the World Series!).

Our New Jersey History Speaks Lecture Series continued this year as well. The monthly program, run in partnership with the Moorestown Library drew big crowds for each session. Speakers covered a wide range of topics starting with our own Linda Vizi's introductory presentation on the quilt exhibit in October and ending with one on the line drawn by surveyor George Keith in 1686 which separated East and West Jersey. In between we learned about the Marquis de Lafayette on the 245th anniversary of his visit to Moorestown, the interesting history of the town of Roebling, and a presentation by Martha Claire Catlin, the Historian for the Quaker Meeting at Woodlawn in Alexandria, Virginia, who spoke about many of the individuals featured in our quilt exhibit, and more.

This year the Historical Society has also fulfilled the largest number of requests for historic plaques since the program's inception. Twenty-two plaques have been created, painted, and lettered, along with researching the history of the houses. Three more are in process as of this writing and three more houses, with requests in, will be turning the requisite one hundred years old soon. Thanks to Trustee Stephanie Herz who researches the homes, HSM member Dave Schill who builds and paints the plaques, and Trustee Julie Maravich who does the lettering.

Over the months of July and August, the Trustees will be working on a new exhibit which will open in the fall. The exhibit will highlight the career of renowned architect Malcolm Wells, who designed the old

(continued on next page)



House Tours and Gift Shop Hours:

2nd & 4th Sunday 1-3 PM
Tuesdays 1-4 PM

Research Library Hours:

Tuesday 1-4 PM
Second Sunday of
each Month 1-3 PM

Address

Historical Society of
Moorestown
Smith-Cadbury Mansion
12 High St.
P.O. Box 477
Moorestown, NJ 08057

Phone

856-235-0353

Web Site

moorestownhistory.org

E-mail

[moorestownhistory@
comcast.net](mailto:moorestownhistory@comcast.net)

Facebook

[facebook.com/historical-
societyofmoorestown](https://facebook.com/historical-societyofmoorestown)

Instagram

[www.instagram.com/
moorestownhistory/](https://www.instagram.com/moorestownhistory/)

*Published Quarterly by
The Historical Society
of Moorestown*

June 2023

COMPASSION EXCELLENCE RELIABILITY

BAYADA Home Health Care provides nursing, assistive care, hospice, and therapy 24/7 to keep children, adults and seniors safe at home.

Call **800-305-3000**
bayada.com



WE LOVE WHAT WE DO

(View From The Porch continued from page 1)

Moorestown Municipal Complex, along with a number of other homes in Moorestown. Wells, who died in 2009, was born in Camden, New Jersey in 1926. The New York Times described him as an “iconoclastic architect who tirelessly advocated environmentally responsible design.” Watch our website and social media for more information as the exhibit comes together.

Finally, this quarterly newsletter has been honored by the League of Historical Societies of New Jersey (www.lhsnj.org) as one of the recipients of the 2023 Kevin M. Hale Publication Awards which recognize excellence in newsletter issues from Historical Societies throughout New Jersey. Award criteria includes design, content, and online availability. Congratulations to all of the Trustees who contribute to each edition and a special shout out to Lisa Knell for the excellent work she does in putting “From the Front Porch” together. A group of Trustees will be traveling to Hunterdon County on June 17th to receive the award.

Have a great summer everyone!

Lenny Wagner, President
(Lwagner559@comcast.net)

The Historical Society of Moorestown

Officers

President

Lenny Wagner

Vice-President

Linda Vizi

Treasurer

Cathy Hartley

Recording Secretary

Liz Rosenthal

Corresponding Secretary

Jill Weiss

Trustees

Mary Berardi

Paul Canton

Nancy Chumney

Michael DiCamillo

Gary Ell

Cathy Hartley

Stephanie Herz

Lisa Knell

Julie Maravich

Liz Rosenthal

Linda Vizi

Lenny Wagner

John Watson

Jill Weiss

Anne Woolley

Student Trustee:

Sarah Dowling-Ell

Newsletter Editor

Lisa Knell

Library

Stephanie Herz

Welcome Sarah!



At the Historical Society's Annual Meeting in April, **Sarah Dowling-Ell**, a junior at Moorestown High School was elected to be the **Student Trustee** for 2023-2024 season. Like her father, Trustee Gary Ell, Sarah is passionate about history and has an interest in photography. She is also an accomplished ballet dancer and this summer she will be attending a special intensive program with the Boston Ballet. (photo: Gary Ell)

On May 10th, master surveyors and story tellers **Bruce Blair and Joe Grabas** (in photo) spoke on the topic of “The Still Important 1686 NJ Provincial Path” marking East and West Jersey and why it matters today. “East” and “West” NJ became separate proprietary provinces in 1674.

In 1686, surveyor George Keith and his small crew, combining astonishing skill with steadfast endurance, laid the 60-mile line in just 5 harrowing weeks. The talk was part of the Historical Society's

New Jersey History Speaks Lecture Series.

(photo: Lenny Wagner)



Inscribed Quilts: A Portal to Moorestown History Scenes From An Exhibit



Inscribed Quilt Workshop



Several students from Orchard Friends School participated in a workshop to make their own inscribed quilt. Linda Vizi visited their school and told them how the town where their school is located (Riverton, NJ), was founded in the mid-1800s: Chalkey Gillingham and other investors bought the land by the river and hired Samuel Sloan, a Philadelphia architect, to design the town.

Chalkey's wife, Keziah, signed one of the inscribed quilts in our exhibit.

The students signed their own quilt squares, took a walking tour of the town, and then visited Smith-Cadbury to see the *Inscribed Quilts* exhibit. They learned about the lives and accomplishments of the signers and pondered what historians might learn about them when they study the Orchard Friends School inscribed quilt in 180 years. (All photos: HSM)



Lynne Jenchura finds her husband's signature on a quilt!
(photo: HSM)

Linda Vizi (at right) shares
Inscribed Quilt stories
(All photos: HSM)



Quilt Group Tours & Talks



Quilt Appraisal Event

The news went out that certified quilt appraiser and friend of HSM Karen Dever would be joining us on a Saturday in late April to conduct quilt appraisals at Smith-Cadbury. And you responded — every time slot was filled! On the appointed day, a variety of quilts and quilted items were produced, many from boxes layered in tissue. Each item was measured, photographed, and carefully examined. Interesting stories emerged. Some quilts came with information documenting their provenance while others had clues stitched in: fabrics, patterns, and trims that helped date the handiwork.

Thanks to all who shared their quilts!

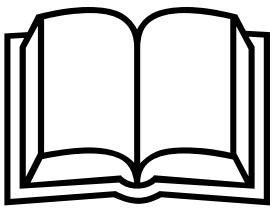


Quilt appraiser Karen Dever (above, right), examines a quilt made in the Courthouse Steps pattern that dates approximately to the 1880s



[For more information about Karen and quilt appraisals, visit her website <https://www.karendever.com/>]

Feathered Star pattern from the 1880s
(All photos: HSM)



LIBRARY NEWS

The Historical Society has usually depended on the kindness of donors for the vast majority of items in our collection. Once in a great while, an item comes to our attention that is so special and important to Moorestown history that we just have to have it. This was the case recently when we purchased a circa 1820s, hand-colored, 16" x 18", survey/map of a large section of central Moorestown north and east of the intersection of Main St. and Chester Ave.

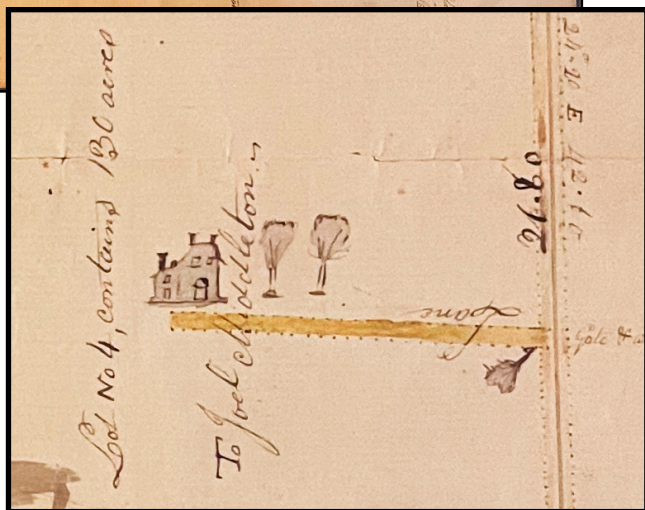
It shows the Friends Burial Ground and the only three houses near the "Public Road" — Chester Ave. One is the house labeled "Joel Middleton" which was said to be raided during the Revolutionary War when it was owned by Nathan Middleton. It was later owned by the Stiles Family, but is sadly no more. The house was located near the current intersection of Central Ave. and Lippincott Ave. The house of Dr. John Stokes

is clearly shown at the site of today's 607 Chester Ave., the oldest portion of which was built in 1753 by Samuel Stokes. And the estate of Samuel Haines is located near the intersection of Chester Ave. and the "Toll Bridge Road" — the current Bridgeboro Rd.

It also shows two small "runs of water" through the area (probably tributaries of the Pompeston Creek), and the tavern known as the Golden Fleece next to the Friends Burial Ground. It also shows two large lots belonging to Benjamin Scattergood and wife, Hugh Roberts' Land, Joseph Matlack's Lot, Moore's Town Land, as well as the many stone property markers placed by the "commissioners" to help set the lot measurements.

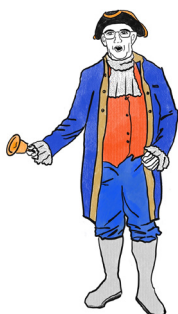
Keep an eye on our website for a high-resolution scan of this important piece of Moorestown history. Purchases of treasures like this are made possible thanks to the generosity of donors to our newly created "Town Crier Fund."

— Stephanie Herz



Historic Map of "Moorestown Lands" recently acquired by the HSM: A circa 1820s, hand-colored, 16" x 18", survey/map of a large section of central Moorestown north

and east of the intersection of Main St. and Chester Ave. An enlarged detail of map at bottom shows: a tree-lined "Lane" leading off of what is now Chester Avenue to the house and lands ("130 acres") of "Joel Middleton". (photo: HSM)



The Town Crier Fund honors & acknowledges Bill Archer's tireless and enthusiastic dedication to the Historical Society. Donations are accepted by check and thru PayPal on our website (<https://moorestownhistory.org/the-town-crier-fund/>).

BUSINESS CORNER

BUSINESS MEMBERSHIPS

Local businesses play an important role when they support the preservation of Moorestown's history. We welcome and thank our business members and we ask our members to patronize them!!

EVENT SPONSOR

Powers Kirn Law Office

BUSINESS PARTNER

The BAYADA Way Institute
David Ramsay Cabinetry & Fine Woodworking
Hanamirian Law Firm
Whitesell Construction

FRIENDS

Flagg's Garden Center
Lewis Funeral Home
GCF Organizing
Moorestown True Value Hardware
Tait Co/Tait Roofing
Leonberg Nursery

Your generous support helps to sustain the Society's commitment to preserving Moorestown's heritage for generations to come.

Again, thank you!

New Business memberships are always welcome! We'll feature your company's name on our website and in our award winning quarterly newsletter.

For details, visit us at <http://moorestownhistory.org/membership/become-a-business-partner/>

The Historical Society is a registered 501(c)(3)

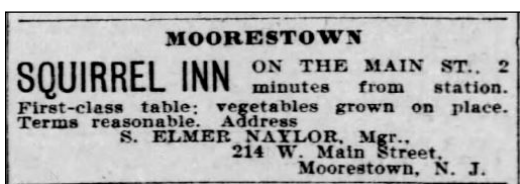
In our last issue of the newsletter we learned about the historic taverns and inns of Moorestown such as Coles Hotel and



The West End Hotel. In addition to those larger (and liquor-licensed establishments) there was a variety of other hotels and boarding homes around town to provide lodging for visitors and residents.

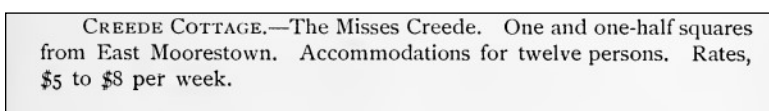
One of the most centrally located and long-lived hotels was the building at the northwest corner of Mill and Main Streets. Originally the home of John Buzby and now the home of Bayada Home Health Care, the house became a hotel by the late 1920s. The 1928/29 Moorestown Chronicle Directory shows the Hotel Newlin at 1 West Main St. It operated as the Rulon Hotel from the mid-1930s to the mid-1940s. In the 1958 Directory of Moorestown it was known as the Colonial Inn.

Some hotels didn't last as long. The Squirrel Inn was at 214 W. Main St. around 1900 and we know it only from its ad in a 1900 edition of the Philadelphia Inquirer:



The Valley View Inn, owned by Edward Halleran was at 164 E. Main St. from around 1926 until 1934. Halleran was the last owner of the Cole's Hotel, a member of the township committee, and president of the Relief Fire Company.

An ad for the Creede Cottage can be found in the booklet *1894 Suburban Homes On The Lines Of The Pennsylvania Railroad within a Radius of Thirty Miles Around Philadelphia: Useful Information for Summer-home Seekers*:



Boarding houses seemed to be the domain of widows and single ladies back in the day.

- The 1901 Boyd's Burlington County Directory had a business section where Miss Emma Cox advertised her long-running boarding house at 58 East Second St., widow Margaret C. Lamb advertised for boarders at 170 East Main St., and Elvina Wilkins at 48 East Third St.
- In the 1903 Directory, Lydia Evans advertised for boarders at 122 West Main St.
- In the 1905 Directory, widow Mary Jones at 201 Schooley St. and widow Mary Sumner at 16 E. Main St. advertised. Mrs. Sumner was the last owner of the beautiful old mansion at this location before it was demolished and replaced by the Community House of Moorestown.
- In 1907 widow Mary Beckett advertised for boarders at her house at 245 E. Third St.

The boarding house business seemed for some to be transitory—perhaps akin to today's Airbnb.

And of course no discussion of Moorestown boarding homes would be complete without mentioning the Friends Boarding Home at 28 E. Main St. Originally the last home of Edward Harris (former resident of the Smith-Cadbury Mansion), it was started as the Greenleaf around 1896 as a haven for retired local Quakers. It continued, diversified and expanded as a retirement facility until it was sold to the Moorestown Friends School in 2008.

—Stephanie Herz

TOP-TO-BOTTOM: Colonial Inn (1 West Main St.), Rulon Hotel, Sumner Residence, Greenleaf (28 E. Main St.)



(All photos: HSM)

HELP WANTED:

Tired of cleaning your own house?

Come de-clutter ours!



Activities/Events: Help plan, organize and execute events.

Docent Training: Become a Museum and special exhibit guide.

Exhibits: Help create interesting displays of historical artifacts.

Fund Raising: Help plan and hold income-generating events.

Oral History: Conduct oral histories.

Photography: Attend events and take digital photos for our archives and publicity.

Speaker Series: Help select speakers, coordinates meetings.

Publicity/News/Web: Help get Society information to the members and public.

If you'd like to help us (and have fun doing it!) contact us at 856-235-0353 Tuesdays 1-4, or at other times, leave a message. Email us (a better option) at moorestownhistory@comcast.net

Hope to see you soon!

MEMBERSHIP NEWS

Hello Members!

Membership letters have been mailed out to you and we hope you're as excited for our engraved brick opportunity as we are! This really is a wonderful way to both fund videos like the expertly produced film that accompanies our current exhibit, *Inscribed Quilts: A Portal to Moorestown History*, and commemorate a special occasion or person. The videos will bring the history happening here at Smith-Cadbury to you wherever you are; thereby making Smith-Cadbury "accessible" to everyone. Find the first video at our YouTube Channel! (@moorestownhistory)

A reminder that a colorful PDF of this newsletter is available at our website; go take a look! We hope you'll continue to support our mission to provide opportunities for the community to learn about the history of Moorestown and its neighbors. Please renew your membership today or join us if you're not a member yet! More details at our website moorestownhistory.org

We extend a warm welcome to our newest members:

• Nancy & Gordon Smith • Dave Boulden • Glenna Stewart • Susan Mammarella • Valerie Rosa • Janet Skarbek • Flagg's Garden Center •

Jill Weiss, Membership Chair
moorestownhistory@comcast.net



Malcolm Wells overseeing construction of his earth-sheltered office on Dale Avenue near North Park Drive in Cherry Hill in 1971. [Source: Philadelphia Inquirer]

Our upcoming exhibit for the fall is about the architect, Malcolm Wells who lived in Moorestown, and has been called "the father of modern earth-sheltered architecture."

Do you have any stories, photos, information, etc. that might fit in with our exhibit? If so, please email us!



HELP WANTED:

Would you like to volunteer in a historic house museum surrounded by beautiful objects?

We need someone to manage the HSM Smith-Cadbury Gift Shop (and our Online Store!)

(See above for contact information)

MEMBERSHIP APPLICATION 2023/2024

BASIC MEMBERSHIP:

Student (\$10) Individual/Family (\$35)

DONOR LEVELS:

Town Crier Fund (\$50)
 Pathway to History 2.0 Engraved Brick (\$125)
 Library Sponsor (\$250)
 Patron (\$500) Benefactor (\$1000)

RENEWAL
NEW

.....
 Visit our website,
moorestownhistory.org
 for member benefits!

NAME(S):

ADDRESS:

DATE:

PHONE #:

EMAIL:

Make check payable to: Historical Society of Moorestown

Mail to: P.O. Box 477 Moorestown, NJ 08057

Or renew online at: moorestownhistory.org/membership

CALENDAR OF UPCOMING EVENTS

JUNE 2023

Current EXHIBIT Closing: *Inscribed Quilts: A Portal to Moorestown History*

- 6 Smith-Cadbury library & tours, 1-4
- 11 Smith-Cadbury tours & research library, 1-3
- 13 Smith-Cadbury library & tours, 1-4
- 20 Smith-Cadbury library & tours, 1-4
- 25 Smith-Cadbury tours, 1-3
- 27 Smith-Cadbury library & tours, 1-4

JULY/ AUGUST 2023

Open on Tuesdays from 1-4 pm (except for holidays) and by Appointment

For sale in the Smith-Cadbury Gift Shop: **Percheron Park Mugs (\$20)**



SEPTEMBER 2023

Upcoming EXHIBIT: *Malcolm Wells: One Man's Crusade to Save the Environment Through Architecture*

- 5 Smith-Cadbury re-opens library & tours, 1-4
- 10 Smith-Cadbury tours & research library, 1-3
- 12 Smith-Cadbury library & tours, 1-4
- 19 Smith-Cadbury library & tours, 1-4
- 24 Smith-Cadbury tours, 1-3
- 26 Smith-Cadbury library & tours, 1-4

ACQUISITIONS

With each donation we conduct research and sometimes this research leads us into areas of knowledge we weren't expecting. That's exciting! We often say to each other, "Isn't that interesting?!" We also appreciate the time spent with donors, piecing together "the story" relating to the donation (Who wore it? Where was it worn? Why was it chosen?).

Donations to our Collection:

☞ **Joyce Buss** for *The Delaware & Atlantic American Telephone and American Telegraph Phone Company Books of 1926 and 1927 with residential listings and interesting commercial ads and the Classified Business Directory. A real step back in time.*

☞ **Bob Fulmer** for a Stamp Box, Ink, Die, Brush set with a 1903 Ink Patent belonging to Joseph Spade (1928-2002; a Lewiston, PA dairy farmer of German Pennsylvania Dutch heritage). This wonderful donation was featured in our *Inscribed Quilts* exhibit.

☞ **Ruth Hagan** for her unique, extensive, and beautiful Needle Embroidery plans, patterns, and designs depicting Main Street scenes. These treasured pieces of art will reside in our Textile Collection.

☞ **Andrea Maines** for a 1971 Moorestown Development Map citing residential business, highways, schools, parks; representing a window into Moorestown's development.

☞ **Nancy Froelicher** Special thanks for donating another trove of historical pieces portraying what life was like in Moorestown decades ago. We have learned so much — especially about Moorestown's educational system.

Thanks to Nancy, we appreciate with pride the special place and community (in the true sense of the word) that Moorestown was—and is.

☞ **Dennis Weaver** for his latest history books: "The Benjamin Stiles Family of Maple Shade" and "Pioneer Families' Houses of the Maple Shade Area". Dennis' books are informative, interesting, and a valuable resource in our library.

☞ **Frances Collins** for a vast collection from the family of Arthur J. Collins that encompasses many aspects of Moorestown history and includes: a painting, charcoal drawing, and childhood photo of Ena Collins, baby clothes/dolls, doll in large oval glass display dome, unfinished "Crazy Quilt" made by Ena Collins, assorted books, letters, Collins Park Improvement Plans and more... topped off by two large outdoor Wagon Wheels from the Collins Nursery!

☞ **Anne Wooley** for three books that are an important addition to HSM's library collection: "The History of Inventing in New Jersey from Thomas Edison to the Ice Cream Cone", "Alice Paul Champion of Women's Suffrage", & "New Jersey Originals," all by Linda J. Barth.

☞ **Lon & Denise Haines** for an art reproduction of Native American clothing with vivid details of Native American life.

☞ **Lydia Shubert** for a copy of "Susanna and Alice - Quaker Rebels: The Story of Susanna Parry and Her Cousin Alice Paul" (by Leslie Mulford Denis) which now resides as an important addition in HSM's library collection.

If you're into historical treasures from Moorestown... HSM is the place to see them!

— Mary Berardi



Moorestown independent filmmaker, Jackie Cross, filmed scenes for her upcoming feature film, "The Curse of the House of Atreus" at Smith-Cadbury. Our own Stephanie Herz plays the role of the Historical Society member who helps the main character by providing information on the house.

At left: Stephanie Herz, Lenny Wagner, Lisa Vasapollo, and Jackie Cross (All photos: HSM)

Geoff Gamble spoke on the "Ten Crucial Days of the American Revolution" to a full house at the Moorestown Library on March 8, 2023, as part of the Historical Society's *New Jersey History Speaks Lecture Series*. During those ten days, from December 25, 1776 through January 3, 1777, George Washington demonstrated his

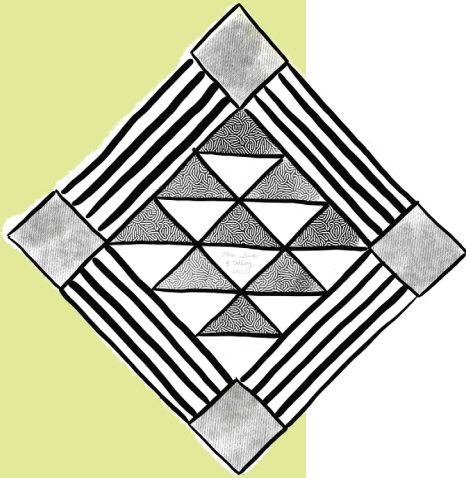


leadership abilities just as the American cause was on the verge of collapse. (photo: HSM)

Historical Society of Moorestown

Smith-Cadbury Mansion
12 High Street, Box 477
Moorestown, NJ 08057

Non-Profit Organization
U.S. Postage Paid
Cinnaminson, NJ 08077
Permit NO. 183



• Historical Society of Moorestown Membership Year
April 30, 2023—May 1, 2024 / Time Travelers Member •

JUNE 2023



YOUR OWN ENGRAVED BRICK AT SMITH-CADBURY

Once again, we are offering an Engraved Brick at Smith-Cadbury. Extensive brickwork paths and patios surround our beautiful historic building. An engraved brick with your text (two lines with 15 characters per line) is available only for a limited time, and with the "Pathway to History 2.0 Engraved Brick Membership Donation Level" (\$125).

Proceeds go toward funding videos like the expertly produced film accompanying our current exhibit, *Inscribed Quilts: A Portal to Moorestown History*, that delivers the history happening here at Smith-Cadbury to you — wherever you are! Watch the video at our YouTube Channel (@moorestownhistory)



Our New Jersey strawberries were particularly "luscious" this year: red, juicy, and plentiful!

The Collins Nursery in Moorestown (established in 1860) sold many different varieties of plants—including strawberries—through either "Express or freight delivery for long distances" or "Our rapid truck delivery for nearby points." Almost 100 years ago, Collins extended "A Cordial Invitation" to visit the 400 acres of Nurseries and Orchards where they grew their plants: "Moorestown is 9 miles east of Camden on the road to Barnegat, accessible by Penna. Railroad, by trolley and by excellent auto highways. The Nurseries are on Pleasant Valley Avenue—a short walk from the trolley. Our sign points the way."

Pages from the 1925 COLLINS Planting Guide (shown at right) describe their many offerings including one of their newest Strawberries, the "St. Martin"; "It is sheer joy to pick such a berry.":

"In this Guide we offer for your selection the most satisfactory, good old stand-by varieties of fruits and berries for your garden, and shade trees, evergreens, roses and flowers for your lawn.

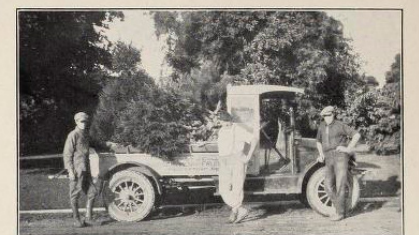
Do not postpone planting another year; it is so easy to order the things and plant them right now and is will not be long before they will bear for you an abundance of fresh fruit and luscious berries; roses in a wealth of color and a gay show of flowers the first season after planting."



A page toward the end of the large catalog (at left) offered this incentive to purchase from Collins:

"Free with every \$5 order one big, thrifty rose bush 2 to 3 years old, as described on inside first page. With every \$10 order 2 bushes FREE—our choice of color. No more than two bushes given on any order. No bush sent unless you ask for it—so we shall know you want it."

[Source: 1925 catalog for Collins Nursery Moorestown, New Jersey Established 1860. Published: Moorestown, N.J., Arthur J. Collins & Son, 1925, pages ii, iii, 24, 55. Biodiversity Library at <https://www.biodiversitylibrary.org/item/229055#page/4/mode/1up>]



We deliver and plant your orders at all nearby points

1925 COLLINS Planting Guide

In this Guide we offer for your selection the most satisfactory, good old stand-by varieties of fruits and berries for your garden, and shade trees, evergreens, roses and flowers for your lawn.

Do not postpone planting another year; it is so easy to order the things and plant them **right now** and it will not be long before they will bear for you an abundance of fresh fruit and luscious berries; roses in a wealth of color and a gay show of flowers the first season after planting.

Our beautiful Evergreens add to your house an immediate richness brightening up the barest corners and making them glow with color.

It is our aim to furnish you all these plants in "the pink of condition," fine-rooted and well-packed, they will all be carefully labeled and the few points you should observe in planting will be clearly set forth when we acknowledge your order.

This year many of you will wish to make your properties more attractive and homelike. We want to help you do it. We can help you. We have the plants and trees, and our Landscape Department has the experience and the ideas to make the most of your planting at moderate cost. We send you cross section paper, with full directions, which enables you to plot your house and the grounds around it, indicating position of any trees in place etc., with little or no effort. You send us the plot, we study it and indicate on it the plantings suggested, quoting a gross price. This places you under no obligations, expressed or implied. There is none of the usual high cost for blue prints and draftsmen's salaries—we are at your service. Ask for Planning Bulletin No. 100 which explains the whole plan.

Yours for better results,
ARTHUR J. COLLINS & SONS, INC.

COLLINS CROSS-WORD PUZZLE (Originals)
\$55.00 IN CASH PRIZES

To stimulate interest in Plants and Flowers we hereby open a contest in the making of Cross-word Puzzles, open to all. Simply make up any puzzle you

COLLINS NURSERIES, MOORESTOWN, N. J.

COLLINS NEWEST BERRIES

St. Martin. Enormous size, many specimens measuring 6 inches and over in circumference, averaging about 30 to the well-filled quart basket. Excels in productivity and size. Berry deep red, no knotty tips. Flavor excellent. Plants make many vigorous runners, and a few plants set out will soon make a thickly matted row. Long after the other berries have dwindled in size and stopped bearing, the St. Martin is still ripening up big luscious berries. Every berry matures fully whether it is the first or the last picking of the season. It is a sheer joy to pick such a berry. Price same as "Bushel Basket." (See below.)



St. Martin plants \$3.75; 250 plants \$7.50.

Bushel Basket Strawberry
This is something very new and startling in the Strawberry line. One plant has been known to produce 508 plants in a summer, of course the plant was fed strong plant food. Some Bushel Basket Strawberry plants grow so large that a bushel basket will not cover them. The berry is of sprightly flavor and of a beautiful shade of red. It is slightly necked, making picking easy, is extra large, and is a good camper being red to the core. It is not hollow at the core nor tough, and has small seeds. It is a money-maker. This berry has won the Barry Gold Medal.

Price of St. Martin and Bushel Basket. 12 plants 90 cts.; 25 plants \$1.50; 50 plants \$2.50, postpaid; by express, 100 plants \$3.75; 250 plants \$7.50. Prices for larger quantities on request.