

Demolished Buildings of Moorestown



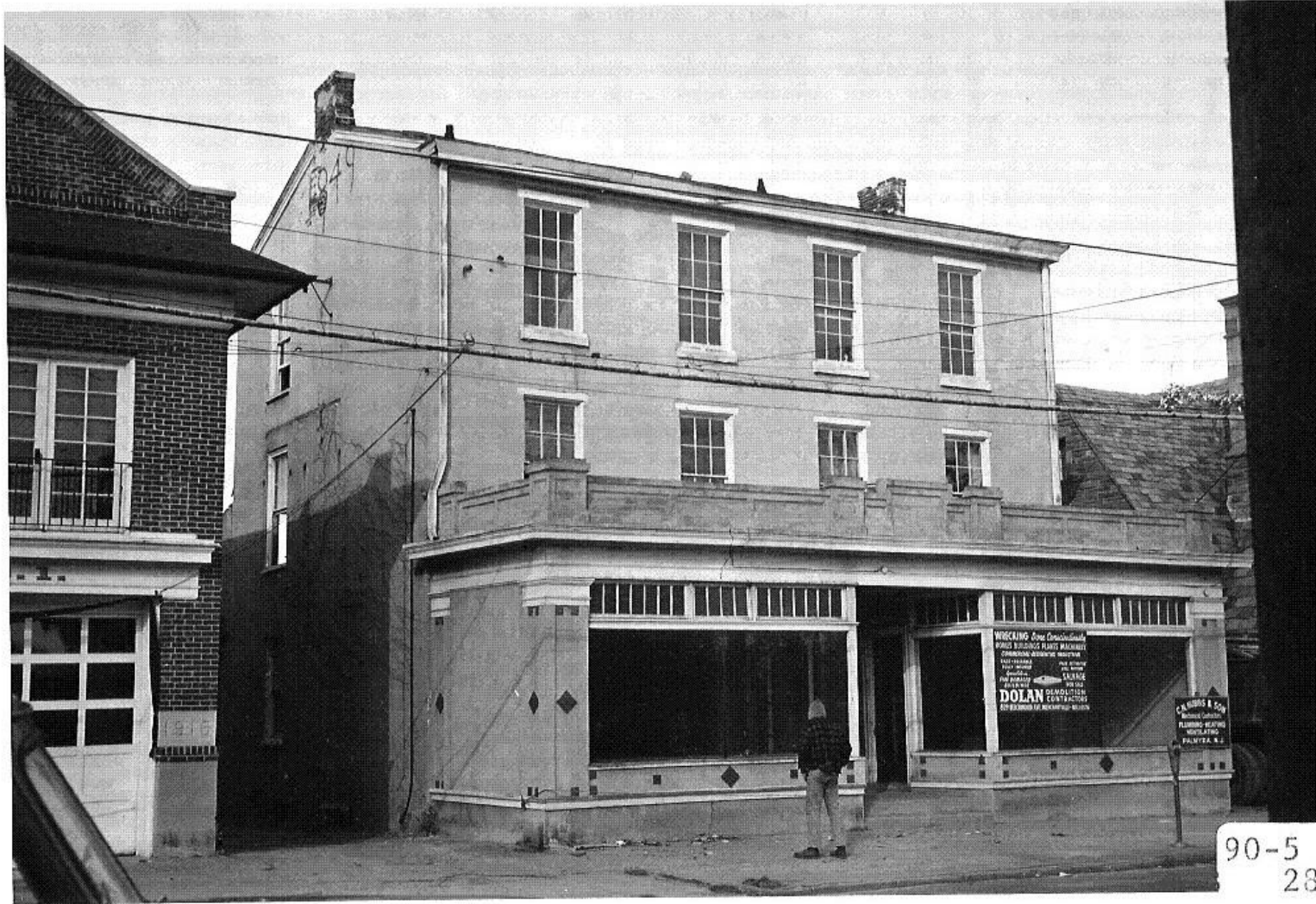
Zelley's Livery on Plum Street



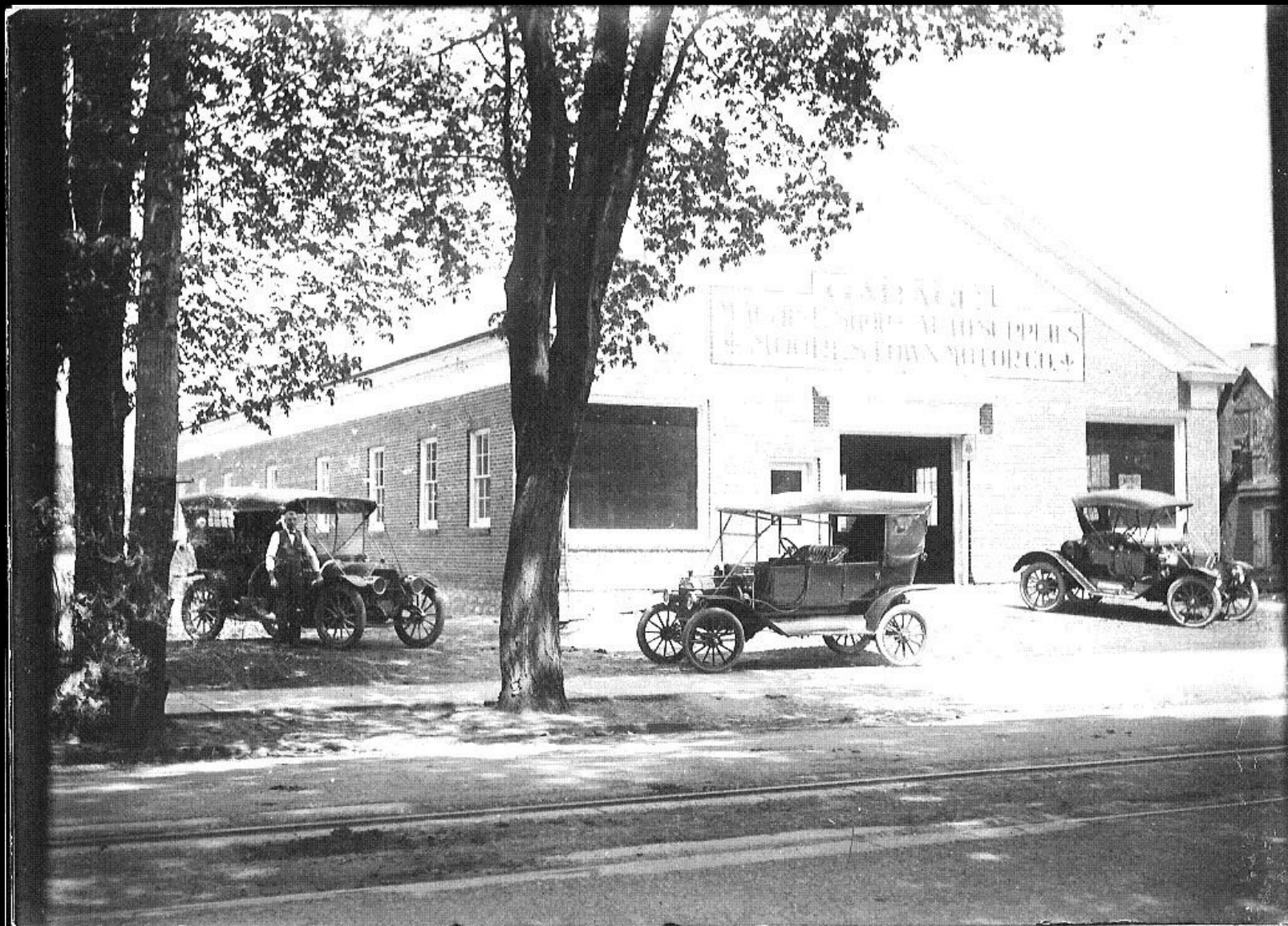
Friends High School at the corner of Chester Avenue and Second Street



201 Chestnut Street



211 W. Main Street



Moorestown Garage 219 W. Main Street



247 W. Main Street



257 and 259 W. Main Street



263 W. Main Street



298 W. Main Street



299 W Main Street



Barcklow Meat Market at 294 W. Main Street



Beech Street from Mill Street



Bethel AME Church at the corner of N. Church Street and Maple Avenue



Bible Protestant Church on W. Main Street



Chester Brick School on School House Lane – in use 1785-1935



Cohen's Department Store at 85 E. Main Street



Coles Hotel at the corner of Main Street and Chester Avenue



Cox's Tavern at 107 E. Main Street



Dr. Thorne's at 77 E. Main Street



J. G. Williams family

Home of J. G. Williams, "Elmwood", on Lenola Road, near the Moorestown Mall



Friendship School at the corner of Church Road and W. Second Street.



A FAVORITE CORNER IN MOORESTOWN

Garrigues' Store at the corner of Third Street and Chester Avenue



The Home of William Rhoads, "Hereshome", on Riverton Road



Heritage Homestead on New Albany Road



Hollingshead Clock Shop at the corner of Main Street and Chester Avenue



Home of Dr. Walter Gardiner at 229 W. Main Street



Home of Kitty French on W. Main Street, near the Wawa store – January 1887



Hooton Hall on S. Church Street, at Mt. Laurel border – Prior to 1917



Hose Co. No.1 on North Washington Avenue, between Second Street and Third Street



Hubb's News Agency at 63 E. Main Street



Jonathan Pettit Barn on Featherbed Lane



Jonathan Pettit House on Featherbed Lane



Lutheran Church (formerly Presbyterian) at 310 Chester Avenue – Demolished 1971



Mary Lippincott's Boarding School on E. Main Street, near Stanwick Road



Matlack's Dairy Bar on King's Highway



Methodist Episcopal Church at 49-53 E. Main Street



Measy's Store at the SE corner of Main Street and Church Road



Moorestown Airport on Westfield Road



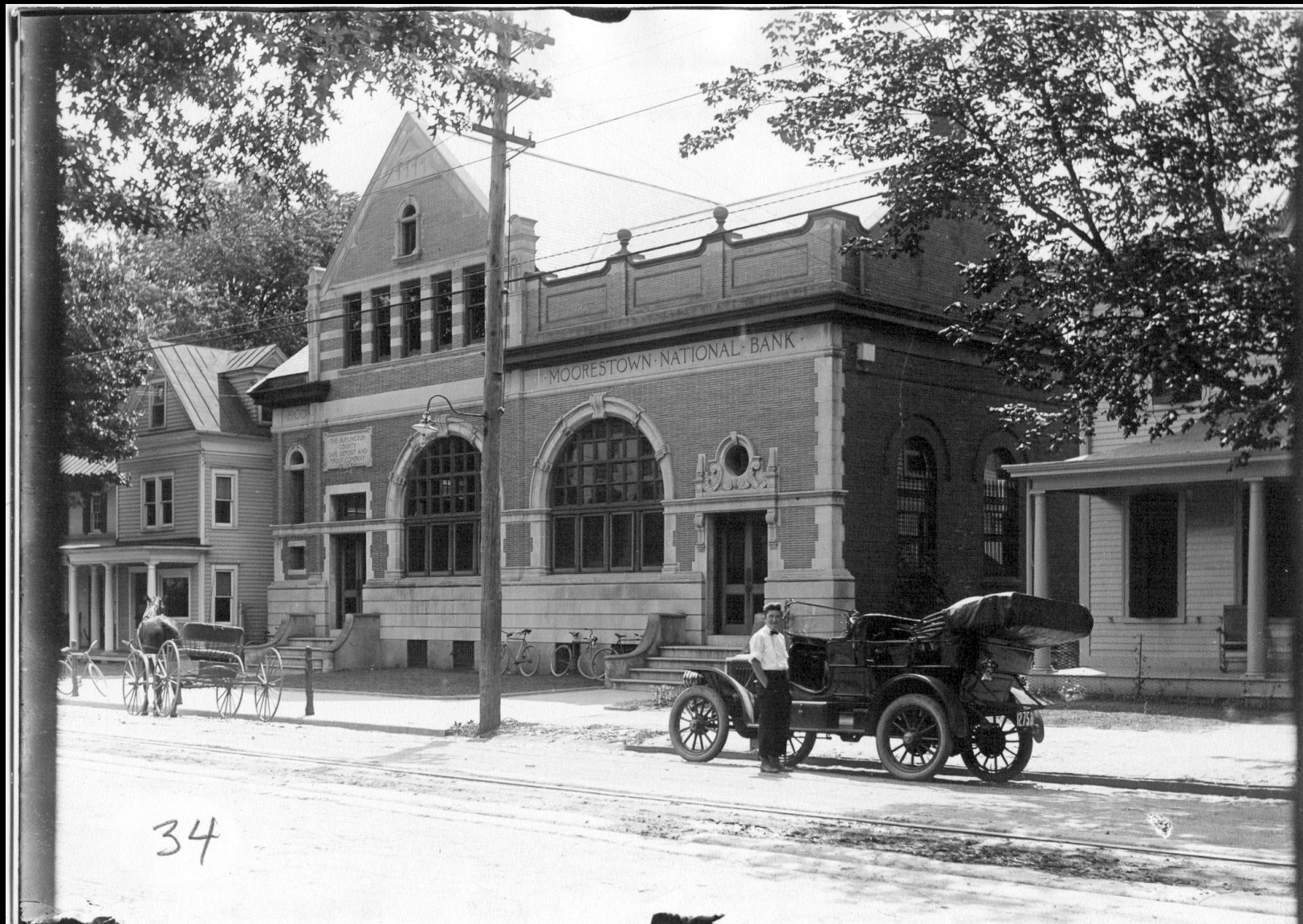
Moorestown Chronicle at 226 Chester Avenue



Moorestown Elementary and Public High School on Second Street



Moorestown High School at the corner of N. Church Street and
Second Street



34

Moorestown National Bank at 70-74 E. Main Street



Moorestown Police Station on Second Street



Moorestown Public School #9 at the corner of Second Street and Church Road - Discontinued use circa 1961



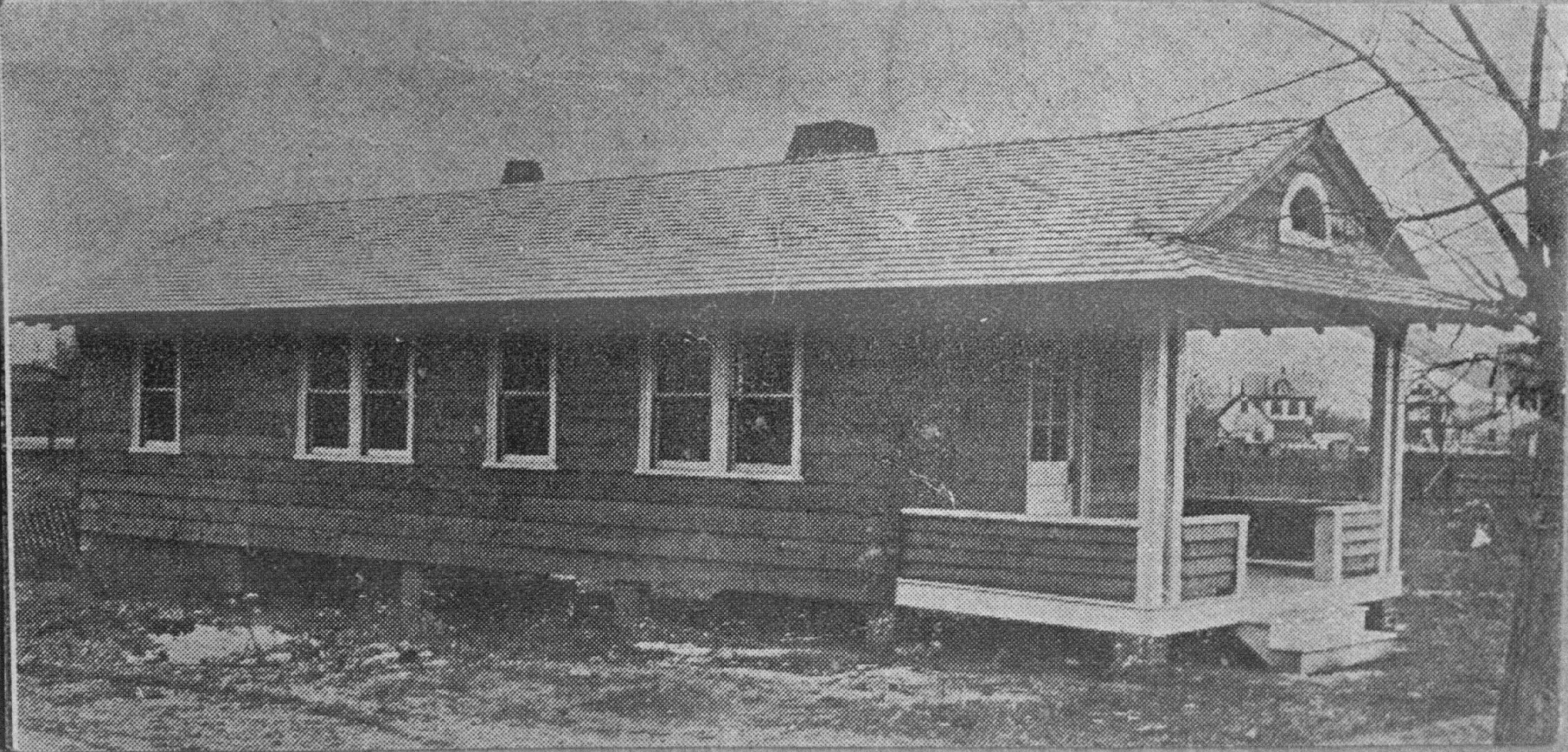
Mortland Meat Market at 41 E. Main Street



Mortland Meat Market at 41 E. Main Street



Oakwood, home of Mary and Rachel H. Roberts, on Lenola Road near the Moorestown Mall



HOME OF MOORESTOWN Y. M. C. A.

Old Moorestown YMCA on N. Washington Avenue



Old Roberts Home on Marne Highway



Page School or Poplar Grove School on Old Salem Road



School #7 on N. Church Street



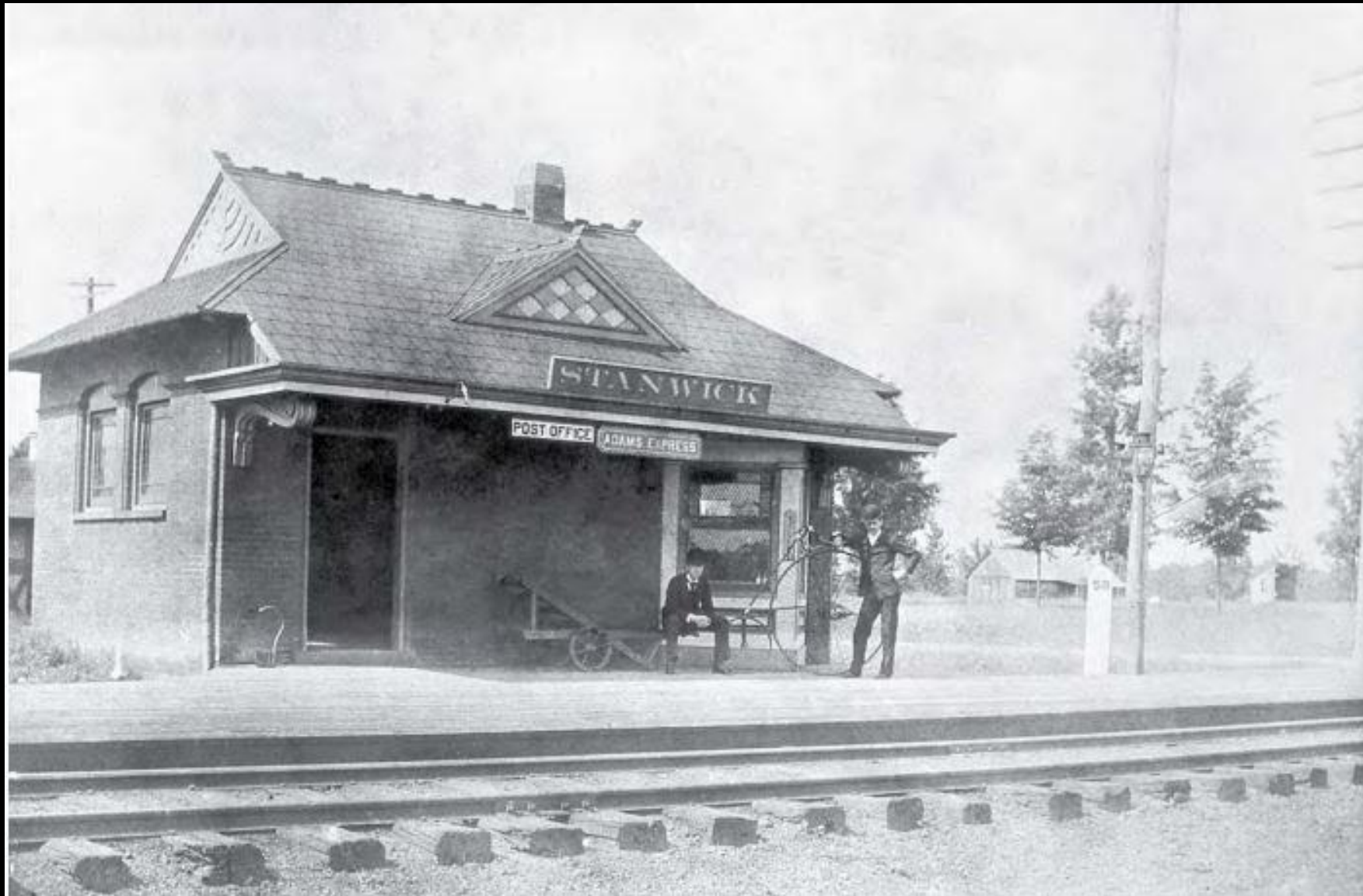
Second Street – now municipal parking lot – circa 1935



Stanwick Carpet Co. on E. Third St.



Stanwick School at the corner of Zelly Avenue and Linden Street



Stanwick Station at the corner of Third Street and Stanwick Road



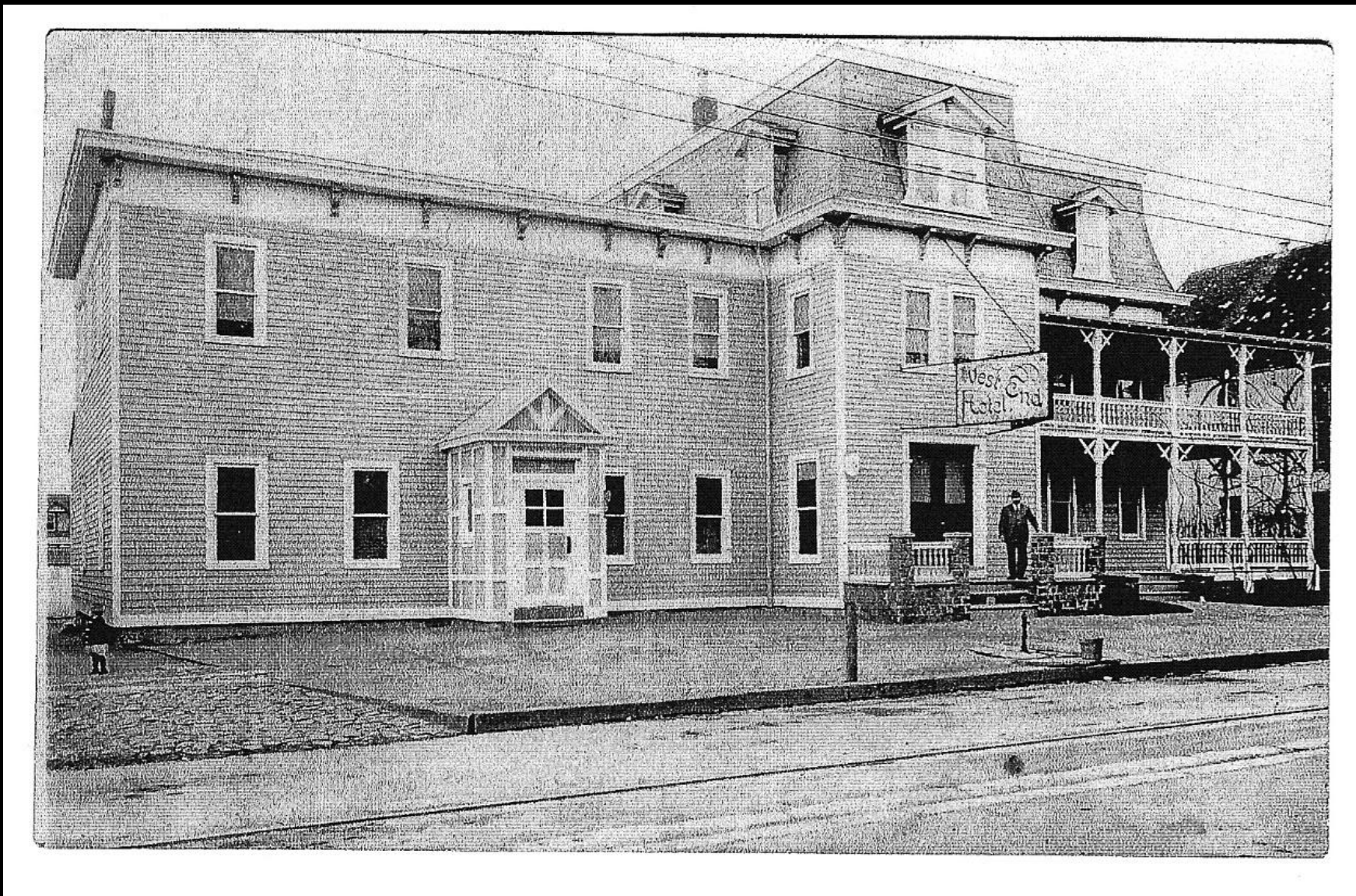
Sumner Residence at 16 E. Main Street



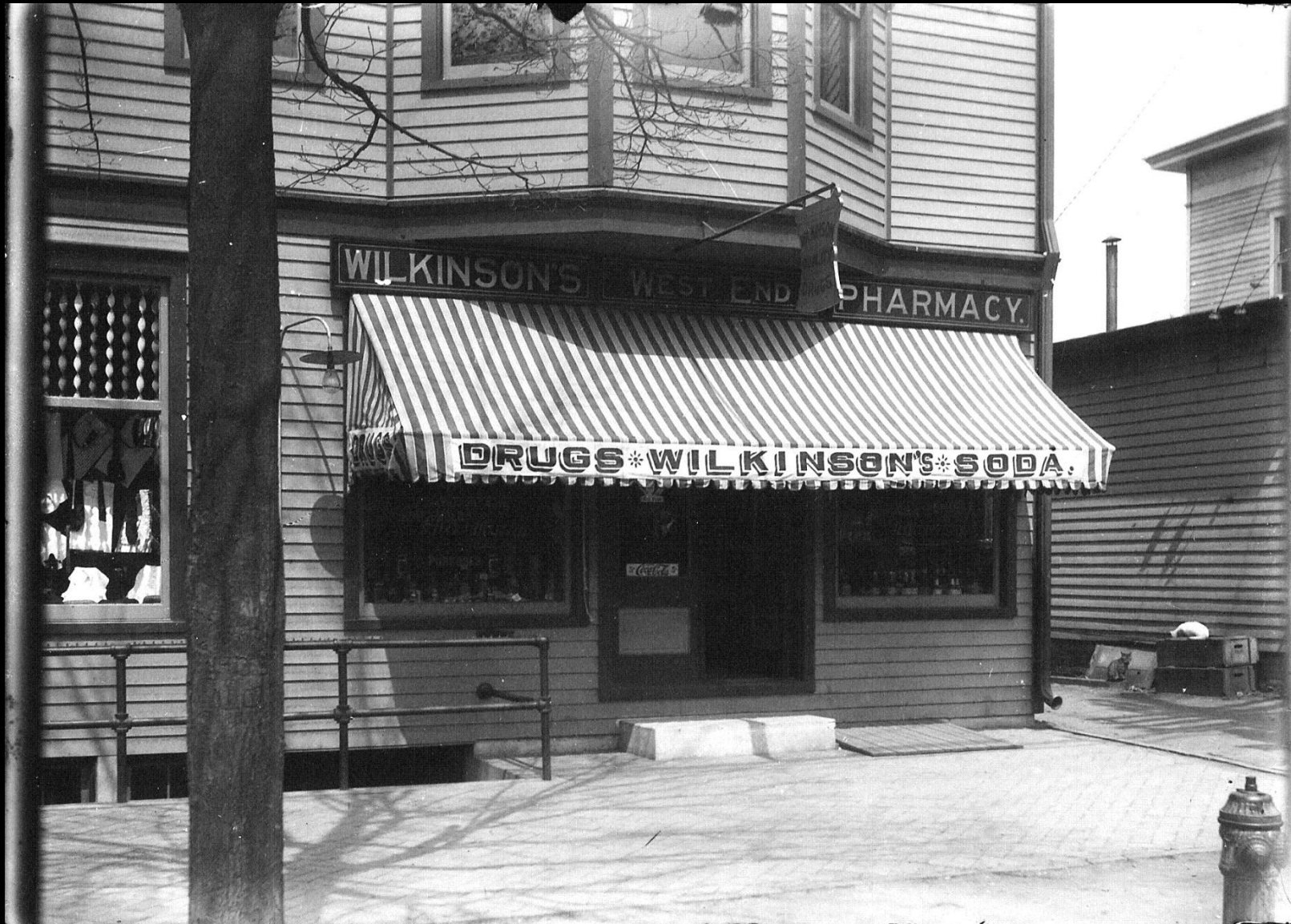
Uriah Borton House at the NW Corner of W. Main Street and Union Street – Demonished mid-1930's



West End Community Center at 425 N. Church Street



West End Hotel at 101 W. Main Street



Wilkinson's West End Pharmacy at 101 W. Main Street



Witcraft's Restaurant at 105 W. Main Street